



## ARC280 / ARC400

Saldatrici/generatori a corrente continua a 2 e 4 poli con spazzole

- > Protezione: IP 23
- > Tipo di elettrodi saldabili: tutti i tipi inclusi basici e cellulosici.
- > Fornita di protezione termica contro i sovraccarichi. Utilizzabile anche come alternatore
- > Forme costruttive: IM B34 - B3/B14, IM B35 B3/B9, IM B35 - J609b, SAE 3, SAE 4, SAE 5

2 and 4 poles direct-current brushes welders/generators

- > Protection: IP 23
- > Weldable electrodes: all types, included basic and cellulosic.
- > Supplied with autoresettable thermal protection against overloads. Can also be used as alternator.
- > Shapes: IM B34 - B3/B14, IM B35 B3/B9, IM B35 - J609b, SAE 3, SAE 4, SAE 5

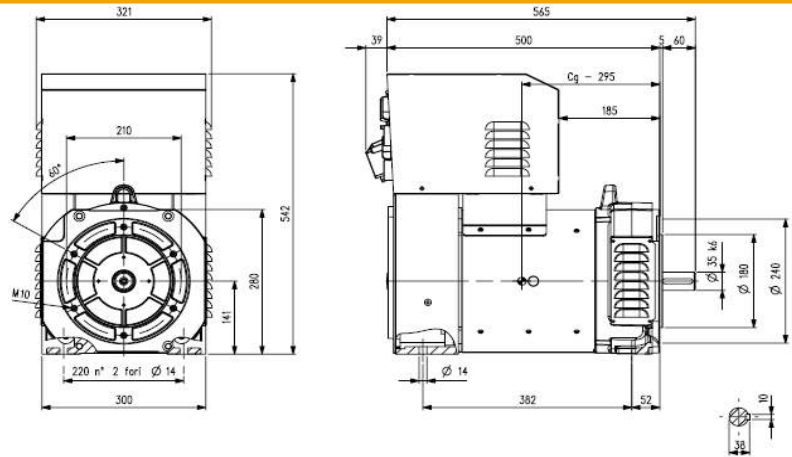
Caratteristiche tecniche saldatrice • *Technical characteristics welder*

modello model	velocità speed	mass	corrente di saldatura DC welding current DC	tensione di innesco strike voltage	tensione di saldatura welding voltage	servizio duty	potenza assorbita driving power
	rpm	Kg	A	V	V		
ARC280 TDC/4	1500	110	40÷280	70	21,6÷31,2	280•35% / 220•60%	280A: 13.6 kW - 18.5 HP
ARC400 TDC/2	3000	110	50÷400	70	21,6÷36,0	400•35% / 320•60%	400A: 22 kW - 30 HP
ARC280 TDC/4	1800	110	40÷280	70	21,6÷31,2	280•35% / 220•60%	280A: 13.6 kW - 18.5 HP
ARC400 TDC/2	3600	110	50÷400	70	21,6÷36,0	400•35% / 320•60%	400A: 22 kW - 30 HP

Caratteristiche tecniche alternatore • *Technical characteristics alternator*

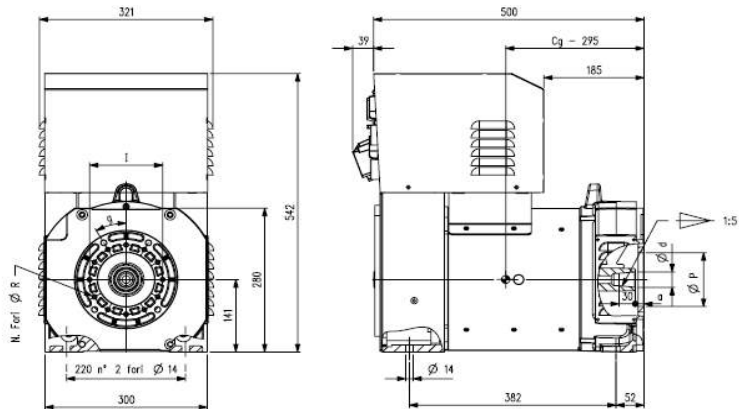
	Trifase (p.f.=0.8) • Three phase (p.f.=0.8)				Monofase (p.f.=1) • Single phase (p.f.=1)			
	potenza power	tensione voltage	corrente (max S1) current (max S1)	frequenza frequency	potenza power	tensione voltage	corrente (max S1) current (max S1)	frequenza frequency
	(S1)- kVA	V	A	Hz	(S1)- kVA	V	A	Hz
ARC280 TDC/4	8	400	11,5	50	3,0	230	13,0	50
ARC400 TDC/2	10	400	14,4	50	4,0	230	14,6	50
ARC280 TDC/4	10	416	13,9	60	4,0	240	16,6	60
ARC400 TDC/2	12	416	16,6	60	5,0	240	20,8	60

### IM B34 - B3/B14



### IM B35 - B3/B9

albero - shaft			Flangia - Flange			
d	a	l	p	N.fori - N.holes	R	g
30	16	135	105	12	9	30°
38	5	150	125	4	12	90°

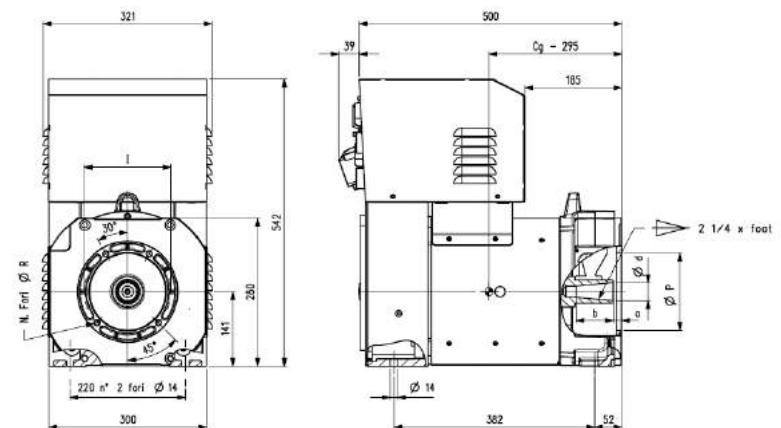


### IM B35 - J609b

albero - shaft		
d	a	b
35	12,4	71

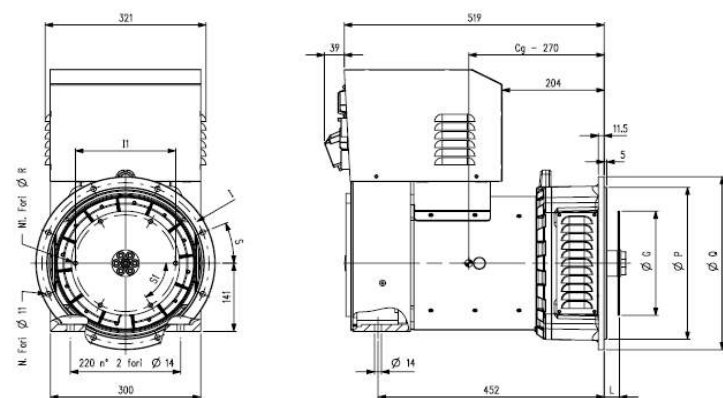
  

Flangia - Flange			
l	p	N.fori - N.holes	R
165	146,1	4	11
197	163,6	4	11
197	177,8	4	11



### SAE

disk											
joint	3	4	5	L	G	l1	N1	R	S1		
6,5	•	•	•	30,2	215,9	200	6	9	60°		
7,5	•	•	•	30,2	241,3	222,2	8	9	45°		
8	•	•	•	62	263,5	244,5	6	11	60°		
10	•	•	•	53,8	314,3	295,3	8	11	45°		
11,5	•	•	•	39,6	352,4	333,4	8	11	45°		
P	409,6	362	314,3								
Q	452	405	358								
I	428,6	381	333,4								
S	15	15	22,5								
N	12	12	8								



ARC 280/ARC 400 - 11/2010 rev.03.2017